

Document No.: Power Flash Decompiler

Power Flash Decompiler

Color7 Tech

<http://www.color7tech.com>

Pages Order

Introduction	Pages 3-4
Register and Purchase	Pages 5-6 5
The user interface	Pages 7-9
How to use Power Flash Decompiler	Pages 10-17
About Color7 Tech	Pages 18
Glossary	Pages 19-20
Tech FAQs	Pages 21-22

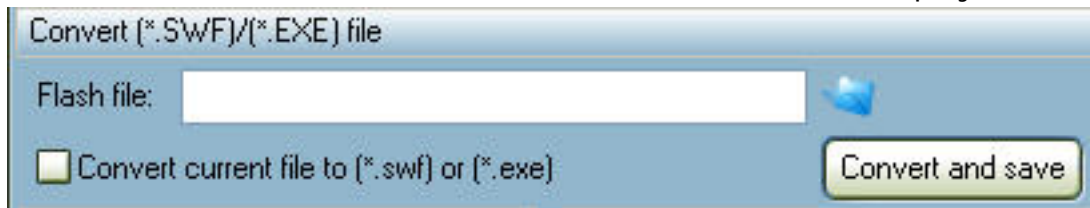



Convert a file

Convert a file

Power Flash Decompiler is also professional Flash Video Convert software. It helps you to convert between exe and swf formats. Learn it step by step.

1. Start a file. Read [Start a file page](#), and use one way mentioned to start a flash movie.
2. Click Convert button on Tool bar. A Convert box will be displayed under the top menu bar:



3. Click the  button to select target folder or write correct target folder manually.

4. Click the  button to start the converting task.

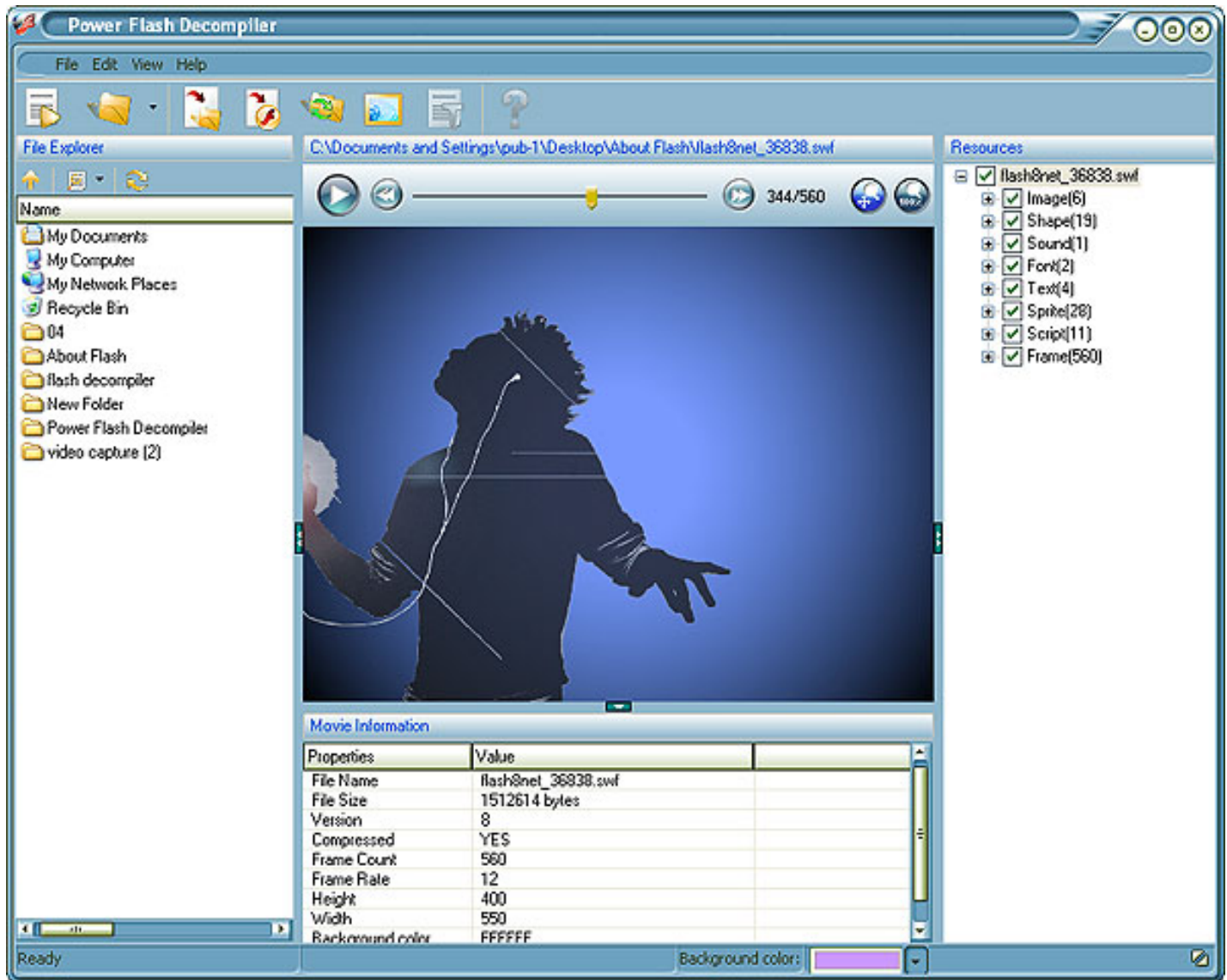


Power Flash Decompiler



Introduction

Power Flash Decompiler is a hot piece of application designed to decompile flash files. It integrates features of exporting resources, converting format, replacing images, editing dynamic texts and exporting FLA data. Detailed user manual may guide you to export resources, extract fla data from flash movie to rebuild new flash file, convert between exe and swf format and edit current flash file effortlessly. By using Power Flash Decompiler, you can find out almost everything in a Flash movie and get back your FLA.



Features:

- User-friendly interface.
- Export resources used by flash files.
- Browse and preview any resource before exporting.
- Detailed tag information.

Replace images of current flash

Edit the dynamic texts of current flash

Export FLA data

Convert between exe and swf formats

System Requirements:

Windows 2000/2003/XP or windows Vista

Pentium 500 PC or higher

64MB RAM or more

www.color7tech.com



Power Flash Decompiler

Register and Purchase



Free Version Limitations

1. Power Flash Decompiler Free Version allows you to decompile flash for 30 times.
2. Power Flash Decompiler Free Version allows you to export FLA data for 7 times at maximum. If you want to get the full function, please register the program.

Benefits of registration:

Full functions of Power Flash Decompiler

Fun in unlimited flash decompiling.

Free upgrade

Free online upgrades on main version with Lifetime Upgrade Policy.

Free technical support

We are pleased to offer our care to meet your needs. Any customer question will be replied within 1 business day!

[Buy Now](#)

Why Power Flash Decompiler

Save Time

- a. It is outstanding both in **speed** and **visual quality**.
- b. The **easy-to-use interface** helps you catch on to the system quickly.
- c. According to surveys, it saves **35%** time in file export.

Save Money

- a. It is your **one-way ticket** to convert and decompile SWF/EXE file.
- b. **30-day money-back** guarantee if you are not satisfied with it!

Easy-to-use

With step-by-step manual, enjoyable interface and **one-click process**, you will greatly enjoy your flash decompiling.

Is my order secure?

As we have for years, we promise the most secure purchase.

[ShareIt](#) and [RegNow](#), all these Color7 Tech partners passed strict certification. We truly believe in 'Only by benefiting our customer can we benefit ourselves'. So your purchase security in Color7 Tech is our top priority! Color7 Tech has been involved in E-commerce for years. And through these years, we built up a secure online shopping system. You can enjoy the high-speed and convenience we offer.

www.color7tech.com

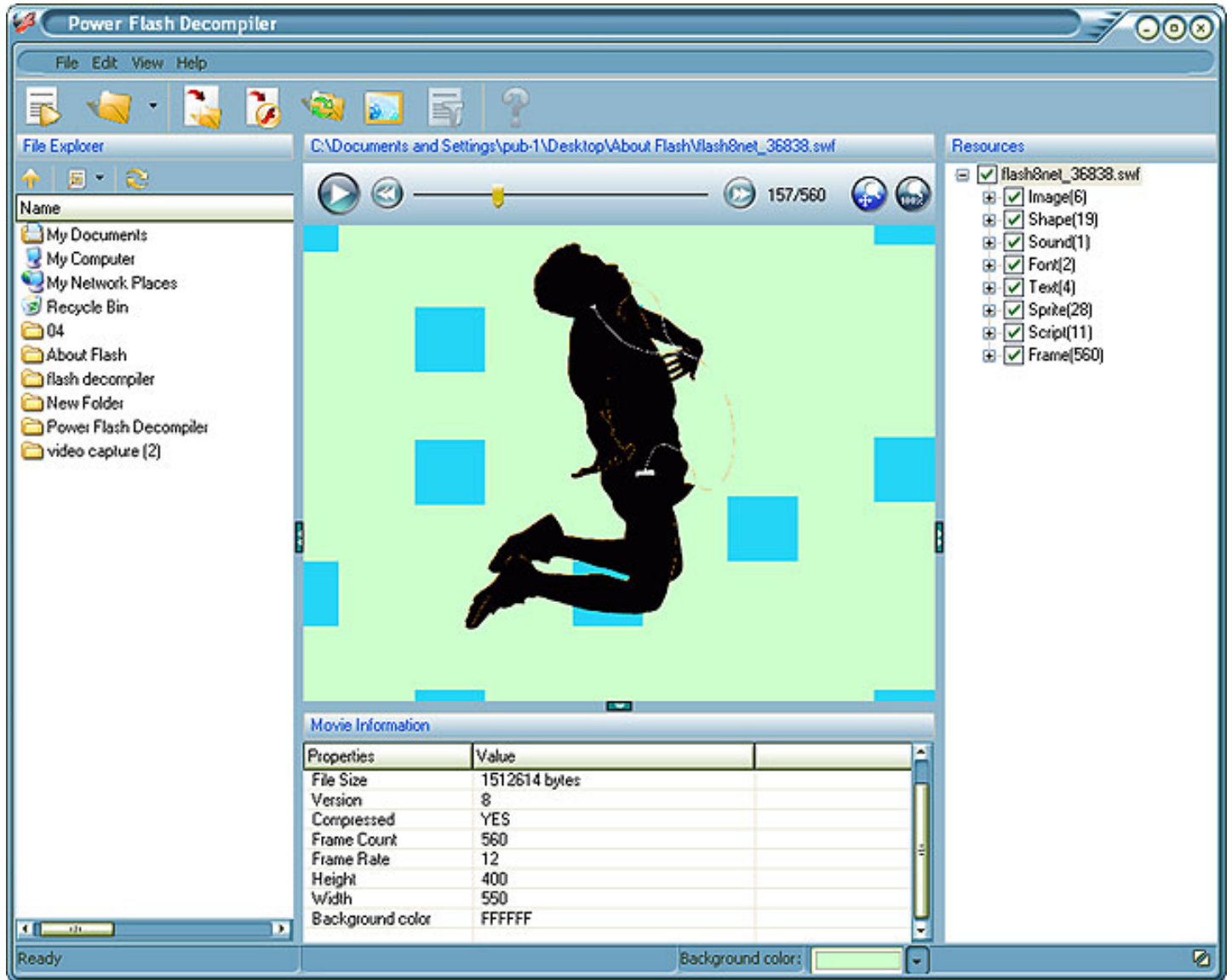


Power Flash Decompiler

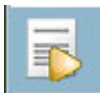
The user interface (Overview)



The user interface (Overview)



Learn information of main window before using Power Flash Decompiler



: Preview flash movie in preview window (resources will not be added to Resources list)



: Start a flash file, the file will be played in Preview Window and all components of the file will be added

Movie Information

Properties	Value	
File Size	1512614 bytes	
Version	8	
Compressed	YES	
Frame Count	560	
Frame Rate	12	
Height	400	
Width	550	
Background color	FFFFFF	

www.color7tech.com



to Resources list automatically.



: Export selected resources. Select desired format(s) for element(s), and then select a directory to save these elements.



: Export FLA data that can easily be edited in native Flash environment. Select a directory to save your rebuilt data.



: Convert flash files between SWF and EXE file.



: Select another image to replace selected image in current flash file.

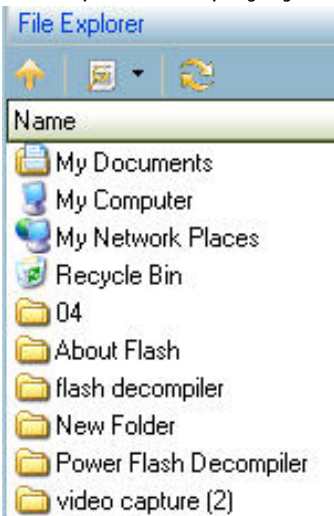


: Edit dynamic texts embedded in current movie.

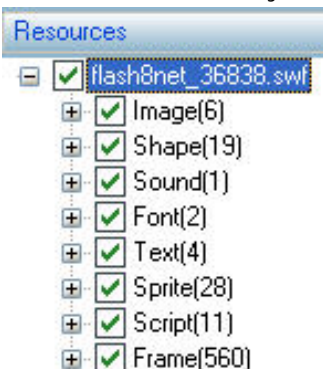


Playback control bar: You can control the movie's play through this bar when you preview it. And you can view the movie or element in original size or size matching the window.

File Explorer: Displays your system folders as a tree.



Resources list: When you open a flash file, Power Flash Decompiler will parse it and list all elements in the list.



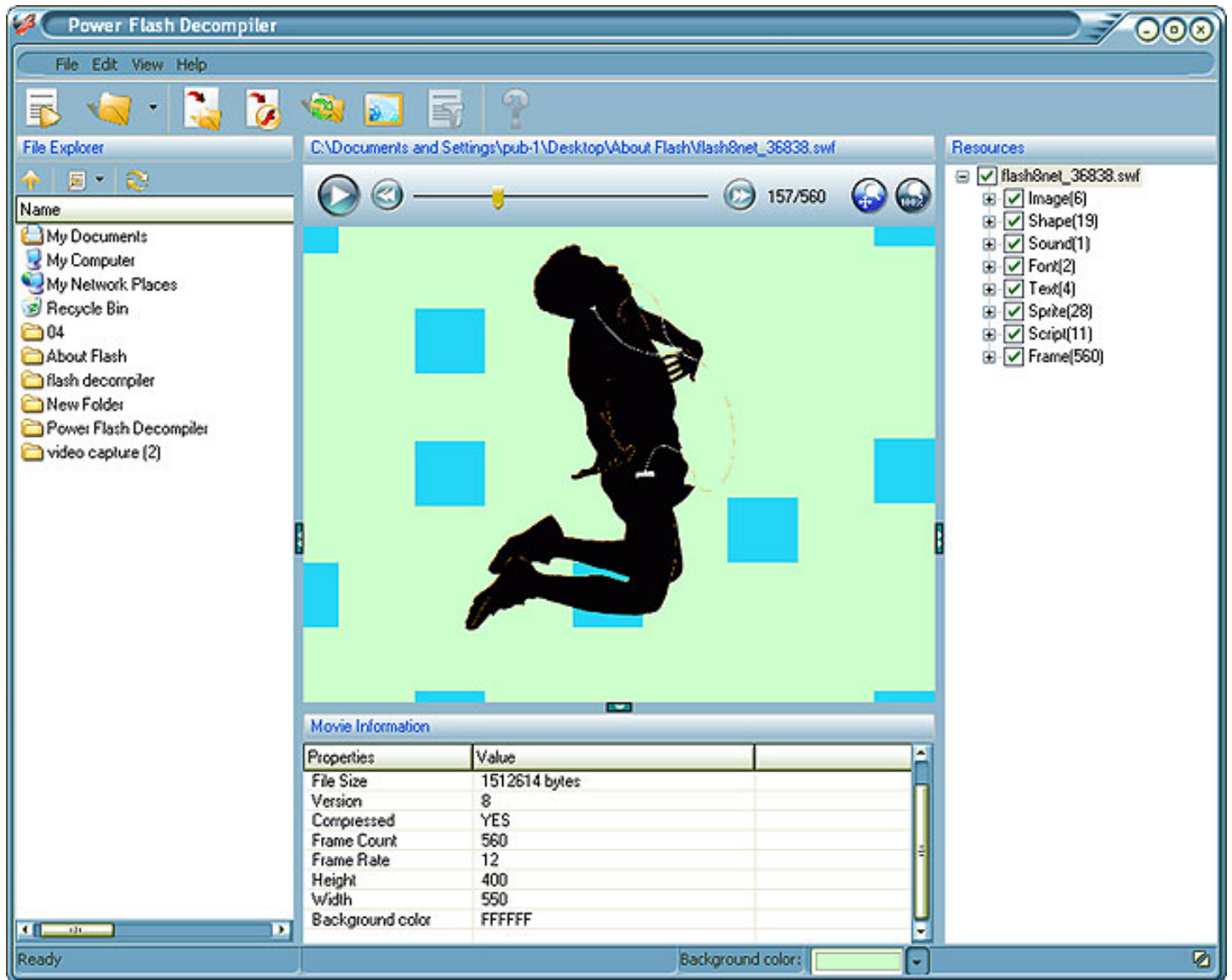
Movie Information Tag: Display detailed information of current flash file.

Power Flash Decompiler

How to use Power Flash Decompiler



How to use Power Flash Decompiler



Power Flash Decompiler is unique and easy-to-use software that integrates a list of features. You can:

A. Preview and browse flash movies

B. Convert flash files between exe and FLA format

C. Export resources used in flash movie and export FLA data that can easily be edited in native flash environment.

D. Replace images and edit dynamic texts in current flash movie

Power Flash Decompiler

Start a file



Start a file

Whenever you start a new file, the changes you make for previous files will not be applied. Be careful when you start a new project after spending some time on your current one. Though you will be asked whether you wish to save the changes you've made, you still have to be careful. Use one of the ways shown below:

1. Find desired Flash file in File explorer, double click to play selected file in preview window, and all elements used by the file can be added to resources list.
2. Click Open button on Top Menu Bar, select a flash file, the file will be played in Preview Window automatically, all resources of the file can be added to resources list as well.
3. Click Preview button on Tool Bar, select a flash file, the file will be played in Preview Window automatically, resources will not be added to resources list.

www.color7tech.com



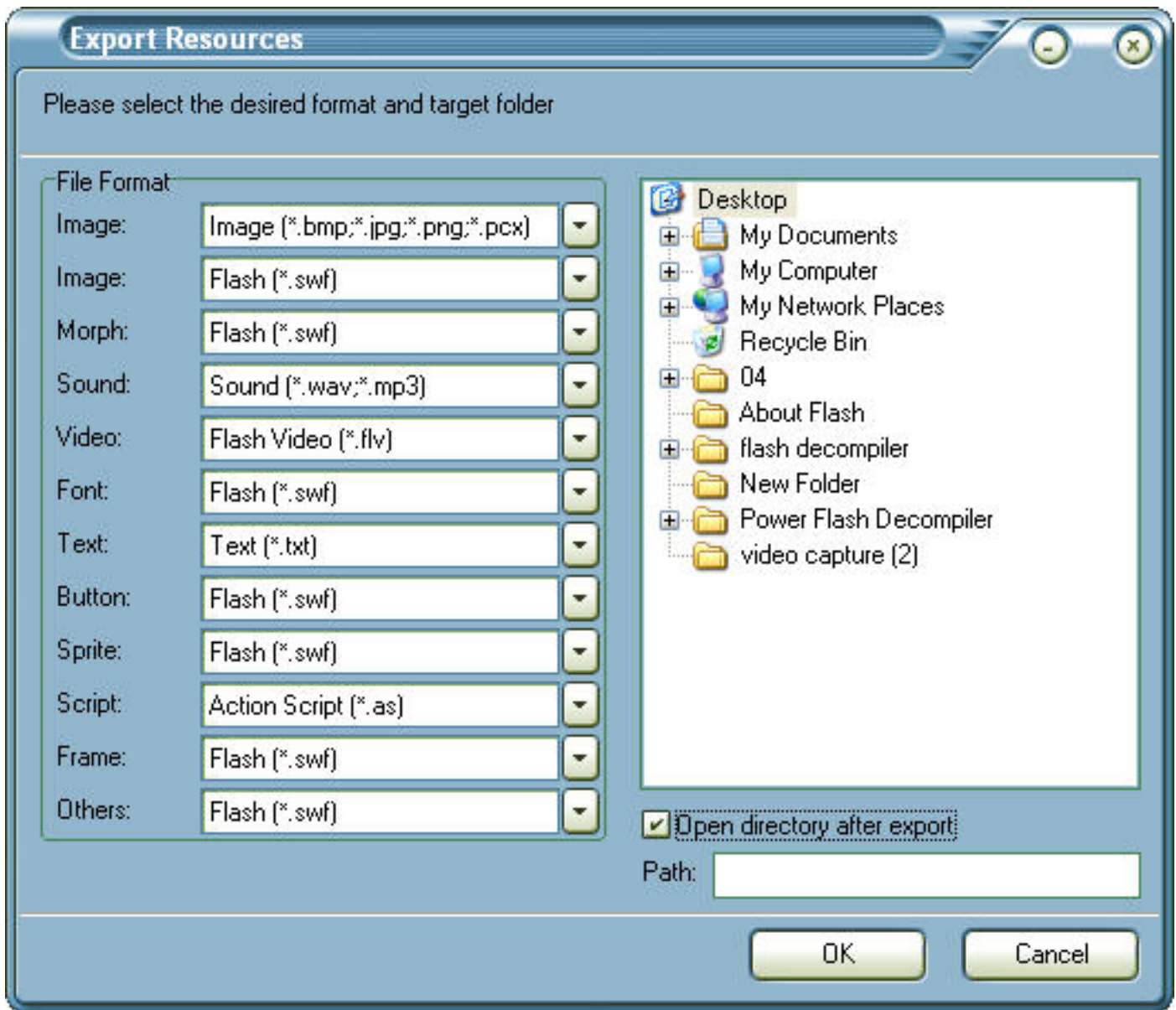


Export resources

Power Flash Decompiler allows you to export all resources used in flash movies. You can easily export some elements such as sound, images, video, shapes, frames, morphs, fonts, texts, buttons, sprites and ActionScripts embedded in a Flash movie and save them to your hard drive. Follow the instructions below to export resources used by current flash file.

1. Start a flash file, all components of the file can be added to resources list. Please also note: If you start a file by clicking Preview button, resources will not be added to resources list.

2. Tick the square box(es) in front of the component(s) you want to export in Resources list, then click **Export Resources** button on top menu bar. An Export Resources window will pop up:



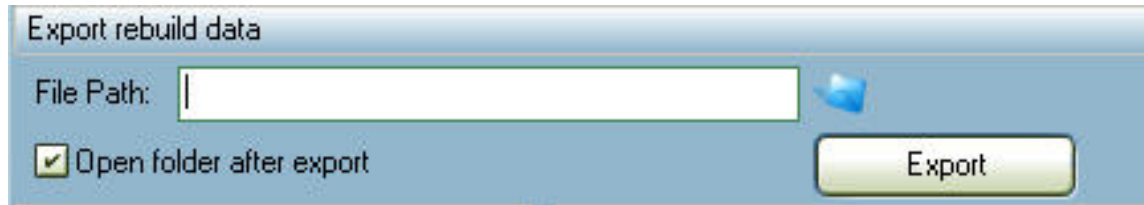
3. Select desired formats for those resources you want to export on Export Resources window.
4. Select target directory from the "system tree" listed on the right or write correct target path manually. Selected elements will be saved to the target directory later.
5. Click "OK" button to start the export process.


Export FLA data

Power Flash Decompiler offers the function of exporting FLA data which can be rebuilt and edited in native flash environment. Learn it now!

1. Start a flash file.
2. Tick the components you want to export in Resources list then click **Export rebuild data** button on the top menu bar. (You can also right click to select Export rebuild data after selecting desired elements in resources list.) A Export rebuild data box will be displayed

under the top menu bar:



3. Select an output path to save data. You can click the  button to select output path or write correct output directory manually.

4. Click "Export" button to start the export process.

Free version limitation: You can export FLA data for 7 times by using Power Flash Decompiler Free Version. If you want to enjoy unlimited flash decompiling, please register the program!

www.color7tech.com



Power Flash Decompiler

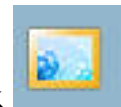
Edit flash files



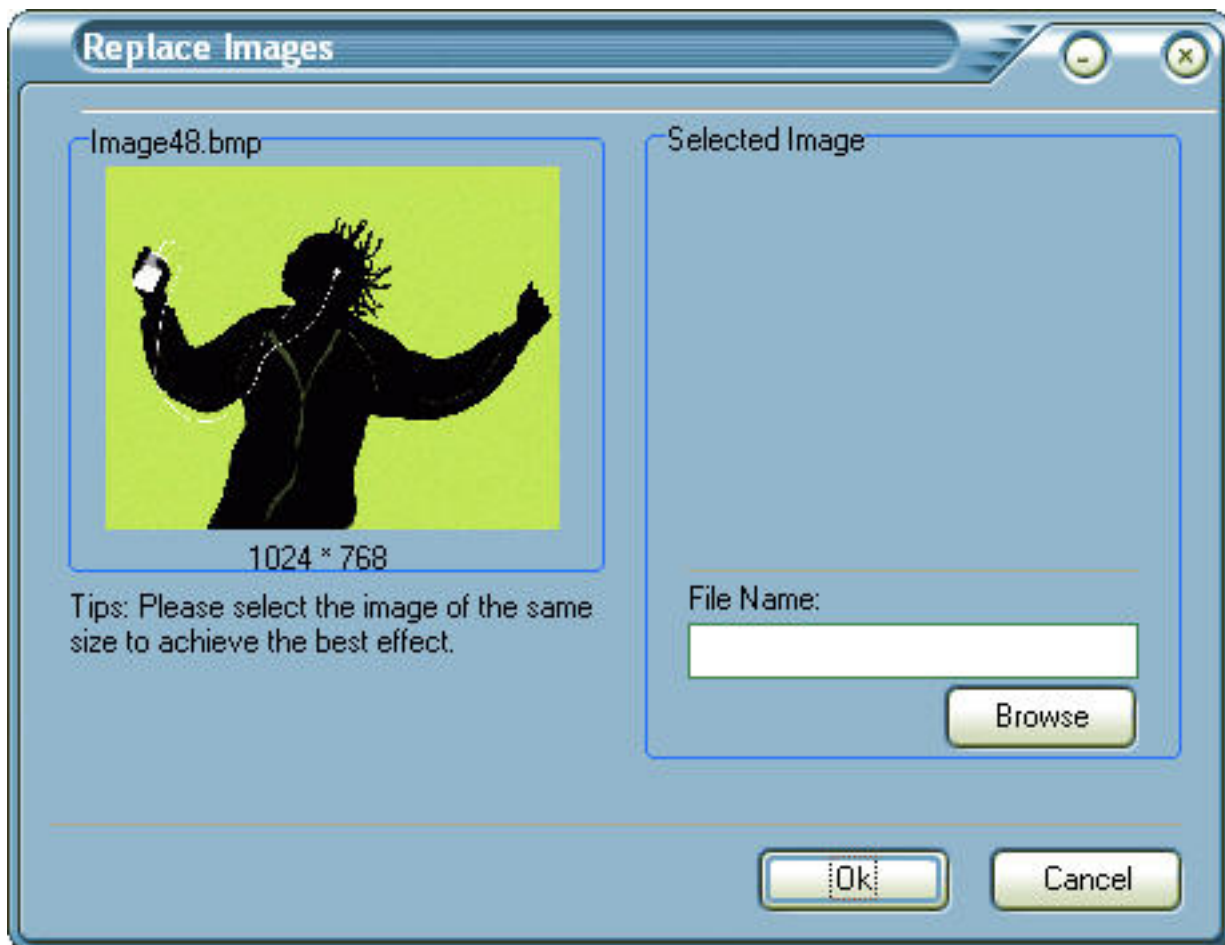
Editing flash files with Power Flash Decompiler is as easy as working with other text or image processing application. It allows you to replace images as your own and edit texts of Flash movies easily.

Replace images

1. Add flash file to resources list.



2. Select the images of flash file you want to edit, and then click button on menu bar. A Replace image window will pop up:



3. Browse an image to replace current one by clicking **Browse** button on the window.

4. Click "Ok" button to confirm the change, all changes will be played in preview window. In order to achieve the best effect, you'd better select the image of the same size to replace current image.


Edit dynamic texts

Editing dynamic texts with Power Flash Decompiler is very much alike as working with any text processing application like MS Word, Open Office, etc. In this way you can adjust text sizes, font, color, etc.

Follow the instructions below to edit dynamic texts:

1. Start a flash file and click the button, then all components of the file will be added to Resources list.



2. Click  button on top menu bar, all dynamic texts used by the flash file will be listed in Dynamic Texts list within seconds.

3. Select one text from Dynamic Texts list, and then type what you wish to appear in the final flash movie in Edit Dynamic Text box. You can adjust text sizes, font, Background color and Transparent Value. All changes can be played in preview window.

3. Click "**Save**" button to apply all the changes to current Flash file or "**Save As ...**" button to save edited movie as a new Flash file.

www.color7tech.com



Power Flash Decompiler

Introduction



About Color7 Tech

Your satisfaction is everything to us!

Color7 Tech is dedicated to the development of professional digital and multimedia solutions. Color7 Tech is professional at digital video codec, patented digital video and audio technologies. We have successfully launched multimedia applications that are robust and powerful, yet friendly enough for all users.

Contact Us

Postal Address:
Color7Tech
9422 National St
Tuskegee AL 36081
USA

Worldwide sales: sales@color7tech.com

Customer support: support@color7tech.com

For customers



Color7 Tech is your first choice

COLOR7 TECHNOLOGY
THE LEADER IN DIGITAL MEDIA

<http://www.Color7tech.com>

www.color7tech.com



Glossary

Image

Graphic in bitmap format. Bitmap graphics describe images using colored dots -- "pixels", which are arranged within a grid. Bitmap graphics are resolution-dependent because the data describing the image is fixed to a grid of a particular size. Editing a bitmap graphic can change the quality of its appearance.

Shape

The vector graphics used in Flash (*.swf file). Vector graphics describe images using lines and curves -- "vectors", which also include color and position properties. You can move, re-size, reshape, and change the color of a vector graphic without changing the quality of its appearance.

Font

Refers the font-family used in this file.

Text

Show the text content of this SWF file.

Button

Refers the buttons used in this file.

Sprite

Refers the "movie clip" used in this file. A movie clip symbol is like a self-contained movie that you can place in a host movie as if it was a single object. It can include animation and interactivity just like a regular movie.

Script

Show the action scripts of this movie.

Frame

Refer the static graphics used to consist this Flash movie.

www.color7tech.com





Tech FAQs

Q: How do I export a shape?

A: In Resource panel, please click on the [+] in front of Shape folder to expand it and show the contents. Click any shape to view it. Then pick the shape you want to export by checking the square box in front of it. Last, click the "Export" button and select a directory to save. Now you have exported the shape successfully.

Q: How do I export an image?

A: To export an image by using Power Flash Decompiler, please click on the [+] in front of Image folder to expand it and show all the image files used in this SWF file. Click any image file to show it in preview window. Then pick the image you want by checking the square box in front of it. Last, click the "Export..." button and choose a valid save path. Power Flash Decompiler supports exporting the image in jpg, png or bmp format. You can choose either during exporting.

Q: Is there a MAC version?

Sorry, currently we only supply the windows version.

Q: Can I decompile my *.exe file with Power Flash Decompiler?

A: Yes, Power Flash Decompiler supports Flash movies in *.exe format. Please make sure your *.exe file is generated by the standalone Flash movies.

Q: I can't see the text in Resources list. Am I doing anything wrong?

A: Everything is correct. Probably the color of the text (or font) is the same with the color of background. Change the background color and you will see it.

Q: Can I export all files at once?

A: Yes, Power Flash Decompiler supports exporting all components of a SWF file at once. You can select all folders by checking the square box in front of them and right-click "Export ..." or click "Export resources" button on top menu bar to get all of them at once.

Q: How to replace images

1. Add flash file to resources list.
2. Select the images of flash file you want to edit, and then click Replace image button on top menu bar. A Replace image window will pop up.
3. Browse a image to replace current one by clicking Browse button on the window.
4. Click "Ok" button to confirm the change, all changes will be played in preview window. In order to achieve the best effect, you'd better select the image of the same size to replace

current image.

Q: I tried to scan a movie and Power Flash Decompiler generated an error, or crashed?

A: Please send this error in detail report and the SWF file to support@color7tech.com . This will help us to check the problem and improve the program. Thanks.

If you have questions that were not addressed in this document, please contact our support team: support@color7tech.com.

www.color7tech.com

